



# MAX

HI-FLOW

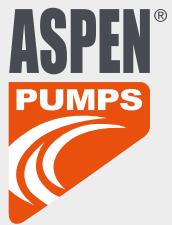


---

## NEW TANK PUMP

---

[www.aspenpumps.com](http://www.aspenpumps.com)  
reliable | silent | simple



## The MAX Hi-Flow

Brought to you from the market leader in condensate removal, our new and improved Hi-Flow tank pump boasts many exciting features - all of which make the MAX Hi-Flow the best tank pump in its class.

As with our entire range you can be assured of unsurpassed build quality and performance as standard; as well as the pump being the safest and quietest on the market.





## The pump

The MAX Hi-Flow keeps a low profile at only 134mm high, 144mm wide, by 285mm long.

The only pump on the market with IP24 rating. Being splash proof allows for safe operating even in the event of water leaks near the pump.

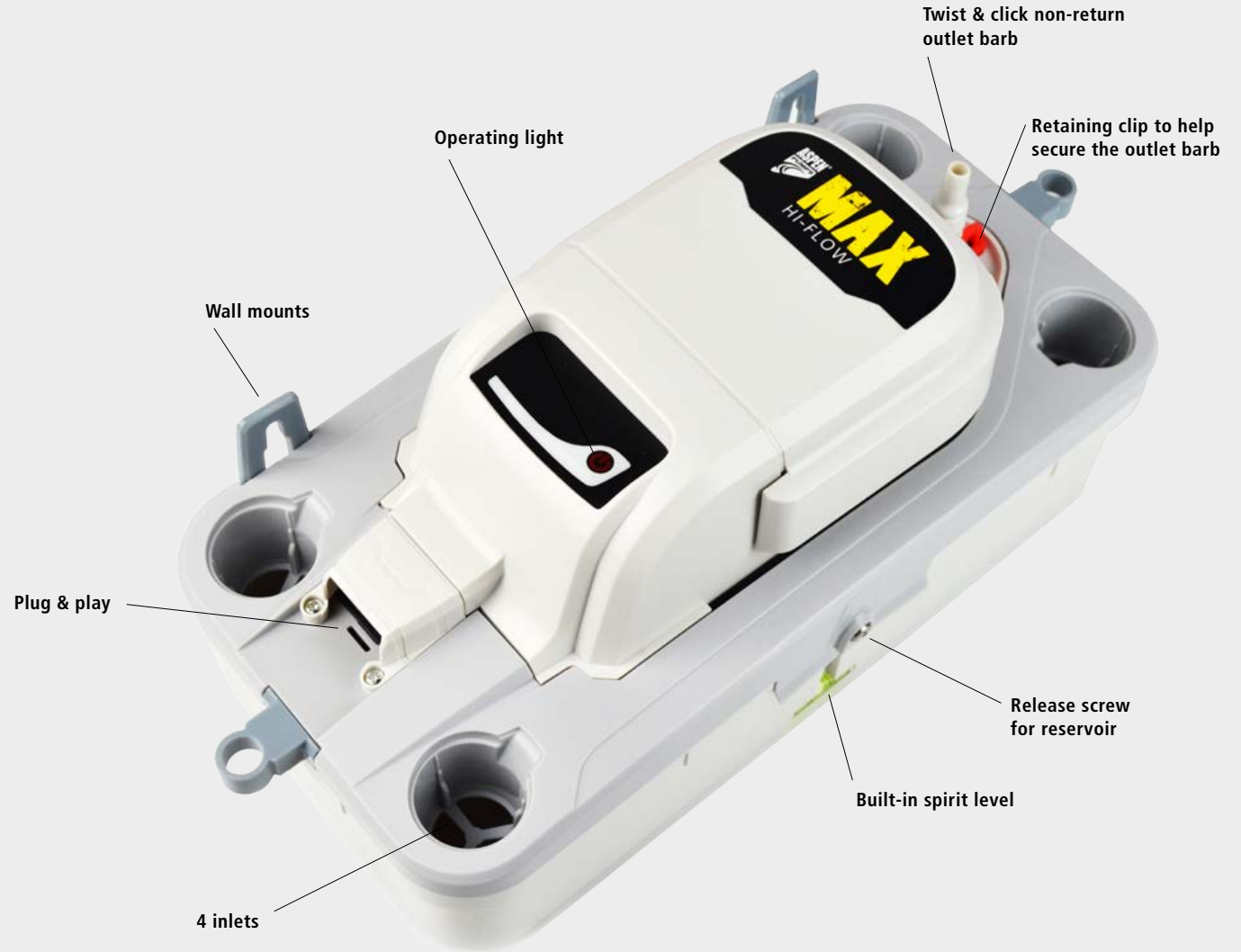
It comes equipped with multiple mounting clips, as well as a built-in spirit level, and plug & play connections; making installation simple and reliable.

A quick release reservoir allows the unit to be serviced whilst still attached to either the wall or rod mounts.

On the inside, the motor and impeller system has been configured to achieve the quietest operating noise level, 44 dB(A), of any tank pump currently on the market.

### In the box:

- 2 wall mount clips
- 2 rod mount clips
- Fixing kit (2 cable ties, 2 wall plugs and screws)





# Performance

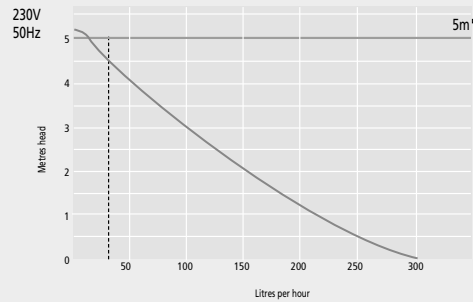
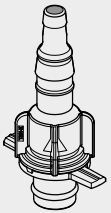
## MAX Hi-Flow (FP3349 UK/EU)

230 vac , 0.8A, 75W, 50Hz	Max. head	Max. unit output	Noise level	Max. water temp
550 L/h	5m	733 kW / 2.5m Btu/h	44dB(A)	40° C / 104° F

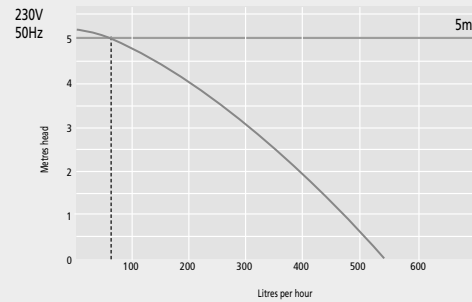
### Flow rates:

The non-return barb has a 6mm opening as standard, which can be cut to 10mm to improve water flow.

6mm

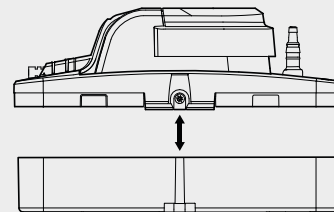
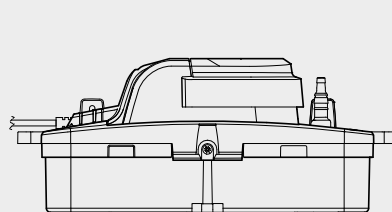


10mm



1.65  
kg • KR

Length:	285mm
Width:	144mm
Height:	134mm





## Evolution, not revolution

Our marketing campaign bases itself on the premise that the MAX Hi-Flow is the best tank pump in its class.

Focusing on the qualities of the pump, the uncompromising build quality, and hassle-free installation with no maintenance call outs, our proposition includes posters and leaflets, as well as in-store point of sale.

Talk to our sales representative to find out how the MAX Hi-Flow Tank Pump can help your business.

**BEST  
IN  
CLASS**





## Contact

[sales@aspenspumps.com](mailto:sales@aspenspumps.com)

tel: +44 (0)1323 848842

[www.aspenpumps.com](http://www.aspenpumps.com)

reliable | silent | simple