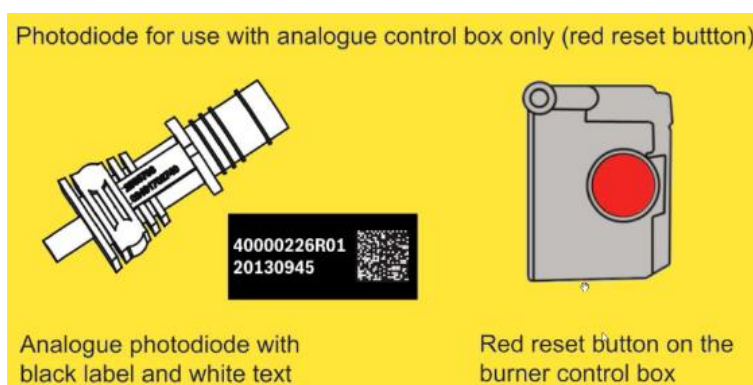


Due to RoHS2 legislation governing the scrapping of electrical goods, Riello no longer supply photoresistor flame detectors (or photocells) for use with their burners. This is due to the Cadmium Sulphide (CdS) present within the photocells, which is classed as a hazardous substance.

Instead, Riello now supply a photodiode sensor, and offer two different types of sensor for use with the different types of control boxes (either analogue or digital) fitted to Riello burners.

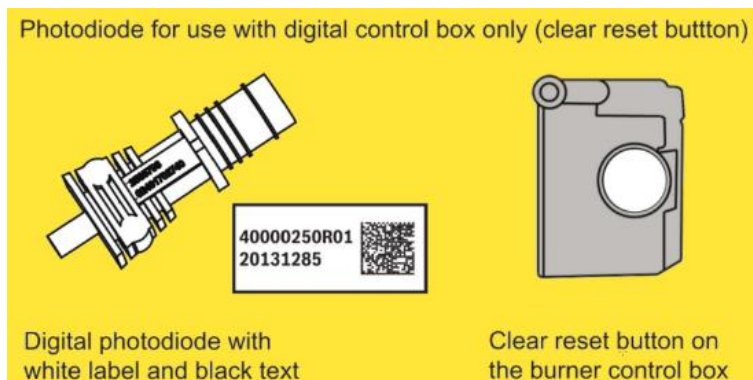
Analogue control boxes

Earlier burners were fitted with analogue control boxes, such as the 53x, 47x, RMO, LAL and LMO types. These are identifiable by a black data label with white text, and a red reset button.



Digital control boxes

Later burners were fitted with digital control boxes such as the MO535, MO550 and MO556 types. These are identifiable by a white data label with black text, and a clear reset button.



Below is a table of PHC product codes and information to aid in the correct selection of the photocell.

Suitable for	Description	PHC Code	Replaces
R40 Range, Mectron & Press Range	Photodiode - Analogue	RI0200	Riello 3002280 Worcester 87161092610 Grant RBS21
RDB Range (Analogue Control Box)	Photodiode - Analogue	RI0204	Riello 3008646 Worcester 87161091930 Grant RBS115
RDB Range (Digital Control Box)	Photodiode – Digital	RI0205	Riello 3008646 Worcester 87161091930 Grant RBS115
RDB Range (Digital Control Box)	Photodiode – Digital, Short Type	RI0210	Riello 3007541 Worcester 87161149810